

Healthcare



Print all your healthcare cards on demand

Uses:

- Doctor IDs
- Nurse IDs
- Health Care Cards
- Allergy Suffer Cards
- Medical Emergency Cards

Did you know:

- You can identify your medical staff and patients, and keep track of who is in your healthcare facility.
- You can control access to specific cabinets, medications, supplies, and patient records.

References:

- RSBY, Health cards, *India*
- Ministry of Health, Social Security Cards, *Japan*
- Ministry of Health, Health cards, *Kuwait*



OUR SOLUTIONS

Evolis Tattoo² Color single-sided card printer



- 2-year manufacturer warranty
- Magnetic or contactless encoding options
- **Printing Speed:**
Color (YMCKO): 40 seconds per card
Monochrome: 7 seconds per card

** cost per print: \$.45 color YMCKO / \$.023 monochrome*

Evolis Pebble⁴ Color single-sided card printer



- 3-year manufacturer warranty
- Magnetic, smart contact or contactless encoding options
- **Printing Speed:**
Color (YMCKO): 150 cards per hr
Monochrome: up to 1,000 cards per hr

** cost per print: \$.325 color YMCKO / \$.014 monochrome*

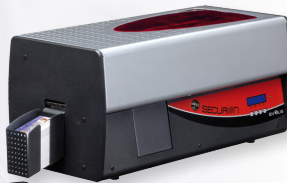
Evolis Dualys³ Color dual-sided card printer



- 3-year manufacturer warranty
- Magnetic, smart contact or contactless encoding options
- **Printing Speed:**
Color 1 side, Black 1 side (YMCKO-K):
125 cards per hr
Monochrome 2 sides: up to 350 cards per hr

** cost per print: \$.40 color YMCKO-K / \$.325 color YMCKO / \$.014 monochrome*

Evolis Security Color dual-sided card printer with lamination



- 2-year manufacturer warranty
- Magnetic, smart contact or contactless encoding options
- **Printing & Laminating Speed:**
YMCK-K, 1.0 mil patch 1 side: 85 to 105 per hr
YMCK, 1.0 mil patch 1 side: 95 to 120 per hr

** cost per print: \$.40 color YMCKO-K / \$.325 color YMCKO / \$.2125 laminate*



Hoobe
Logical. Identification. Solutions.

1255 Treat Blvd. Suite 300 • Walnut Creek, CA 94597
P: 1.800.440.0207 • F: 888.452.2919 • Email: info@hoobeid.com