

Identification & Access Control



Print all your IDs on demand



Uses:

- Employee Badges
- Visitor IDs
- School & Student IDs
- Event IDs
- Access Control Badges

Did you know:

- You can add high-quality photos, text and barcodes to all your badges.
- You can store personal data on your ID cards.

References:

- PGA Tournament, Honda Classic, *Florida*
- HES Convention Group, *Florida*
- Cartier, *Switzerland*
- Nestlé, *Switzerland*
- The International Cannes Film Festival, *France*



OUR SOLUTIONS

Evolis Tattoo²

Color single-sided card printer



- 2-year manufacturer warranty
- Magnetic or contactless encoding options
- **Printing Speed:**
Color (YMCKO): 40 seconds per card
Monochrome: 7 seconds per card

** cost per print: \$.45 color YMCKO / \$.023 monochrome*

Evolis Pebble⁴

Color single-sided card printer



- 3-year manufacturer warranty
- Magnetic, smart contact or contactless encoding options
- **Printing Speed:**
Color (YMCKO): 150 cards per hr
Monochrome: up to 1,000 cards per hr

** cost per print: \$.325 color YMCKO / \$.014 monochrome*

Evolis Dualys³

Color dual-sided card printer

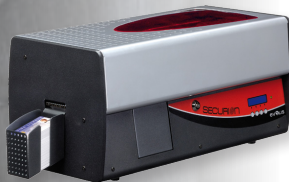


- 3-year manufacturer warranty
- Magnetic, smart contact or contactless encoding options
- **Printing Speed:**
Color 1 side, Black 1 side (YMCKO-K):
125 cards per hr
Monochrome 2 sides: up to 350 cards per hr

** cost per print: \$.40 color YMCKO-K / \$.325 color YMCKO / \$.014 monochrome*

Evolis Securion

Color dual-sided card printer with lamination



- 2-year manufacturer warranty
- Magnetic, smart contact or contactless encoding options
- **Printing & Laminating Speed:**
YMCK-K, 1.0 mil patch 1 side: 85 to 105 per hr
YMCK, 1.0 mil patch 1 side: 95 to 120 per hr

** cost per print: \$.40 color YMCKO-K / \$.325 color YMCKO / \$.2125 laminate*



Hoobe
Logical. Identification. Solutions.

1255 Treat Blvd. Suite 300 • Walnut Creek, CA 94597
P: 1.800.440.0207 • F: 888.452.2919 • Email: info@hoobeid.com

